

- 
- 
- 

# Diabetic foot infections:

a multi - disciplinary management

Dr. Kristien Van Acker, Md, PhD  
Sint Jozefkliniek, Bornem

•  
•  
•

# Working in a team intra-muros and extra-muros

- GP's, home nurses, podiatrists,...
- Individual specialists
- Multidisciplinary teams
- GP's , home nurses, podiatrists,...

•  
•  
•

# diabetic patient

- Casus S.A.
    - 03-07-1940
- Diabetes and Foot ulcer



# Diabetic patient

- DM type 2 since 10 years  
diamicon 3 x1



# diabetic patient

Since 2 months a foot ulcer

- Started with a blister and getted infected
- No pain
- Dermatologist: IBD- gel en tulle, afterwards aquacel
- Ciproxine 2 x 500 mg since 1 month
- NO amelioration



- 
- 
- 

# diabetic foot?

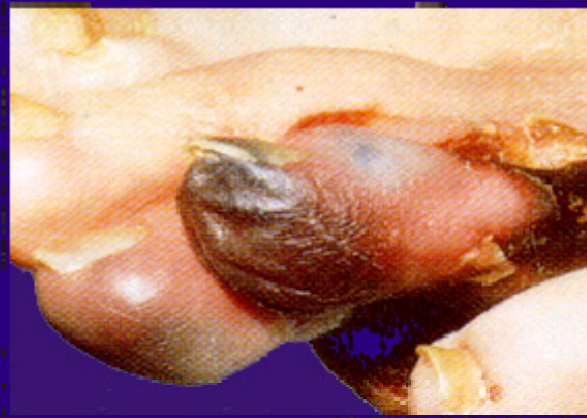






•  
•  
•

# diabetic foot ?



# frequency

- 25 % of diabetic patients will develop a foot ulcer
- 45 - 65 y : 15 x more amputations diabetes
- > 65 y : 25 x more

# Neuropathy:



# Neuropathy:



# Charcot foot:



- 
- 
- 

# Limited joint mobility



- 
- 
- 

# Micro-angiopathy:









# Amputation:



# Other factors:

Co-morbidity



Living  
With  
Diabetes



# Infection:





# Infection

In diabetes, there is a spectacular and fast evolution of the infection!!

« contamination – colonisation – infection – sepsis »

# Recognize infections

« Classical » signs:

Redness

Warmth

Edema

Pain (= absent!)





# Infection?

« Classical » signs:



# Infection?

« Classical » signs:



# Infection?

« Classical » signs:





- 
- 
- 

# Infection?



- 
- 
- 

# Infection?



- 
- 
- 

# Infection?

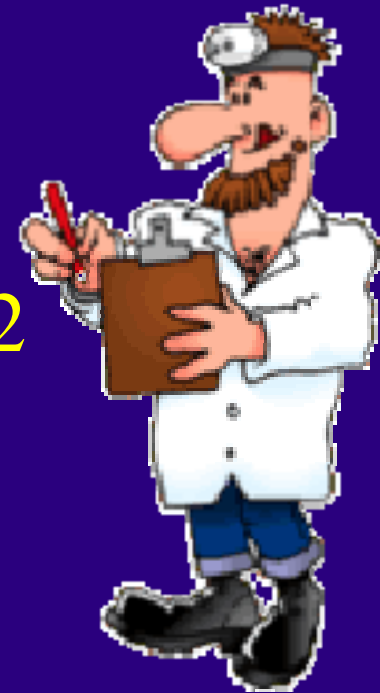


# How to react?

«Fast reaction » for GP's!!!!

+/- 90% diabetic patients = type 2

Type 2 is a disease treated  
by the GP's.





# Wagner classification for GP's

## Wagner Classificatie



Graad I

Oppervlakkige  
wonde

Graad II

Diepe  
wonde

Graad III

Wonde met abces  
of osteomyelitis  
(botontsteking)

Graad IV

Locaal  
gangreen

Graad V

Gangreen  
van de hele voet

# Probe to bone



•  
•  
•

If “probe to bone” is positive = 85%  
chance for osteomyelitis



# *Multidisciplinary teams- diabetic foot clinics*

***22 recognized centres in Belgium***



# International consensus



Classifications,....

- 
- 
- 

# Classifications

- Wagner
- Texas
- ... oa VAP-Classification
- PEDIS

# Workshop: Pedis-classification



# Examples...





- 
- 
- 

examples...



# Examples...



- 
- 
- 

examples...





# PEDIS classification

<b>P</b> perfusion	<b>E</b> extent	<b>D</b> depth	<b>I</b> infection	<b>S</b> sensation
<b>1 no PAD</b> - palpable pulses - ABI 0.9-1.1 - tcpO <sub>2</sub> > 60  <b>2 subcritical ischemia</b> - no palpable pulses - ABI < 0.9 - tcpO <sub>2</sub> 30-60  <b>3 critical ischemia</b> - no palpable pulses - ankle pressure < 50 - tcpO <sub>2</sub> < 30	cm <sup>2</sup>	<b>1 superficial</b>  <b>2 deep</b> muscle, tendon, fascia  <b>3 bone</b>	<b>1 no infection</b>  <b>2 superficial</b> erythema < 2 cm  <b>3 deep</b> erythema > 2 cm, abscess, osteomyelitis, arthritis, fasciitis  <b>4 systemic</b> toxic, t°, leucocytosis (>12000 or <4000 or 10% band forms)	<b>1 normal</b>  <b>2 loss of protective sensation</b> - MF 2/3 neg. - VT < 25 V

- 
- 
- 

examples...



P2-D2-I3-S2







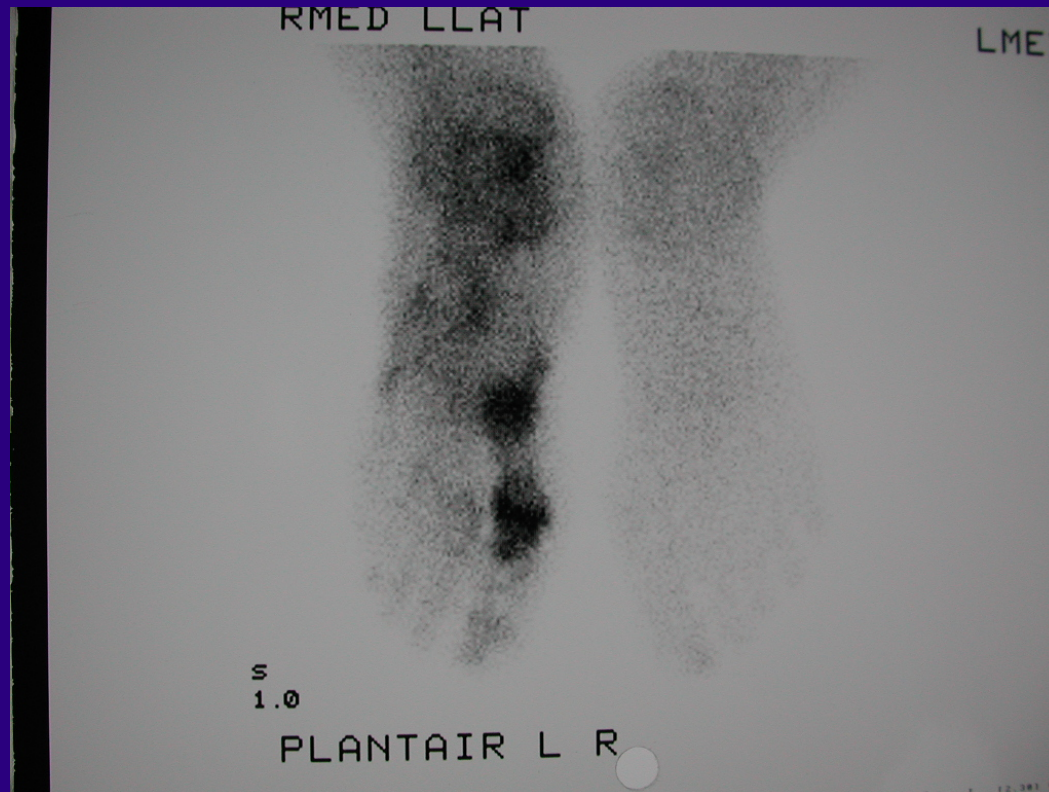
# Off loading



# Microbiological samples



# Imaging,...

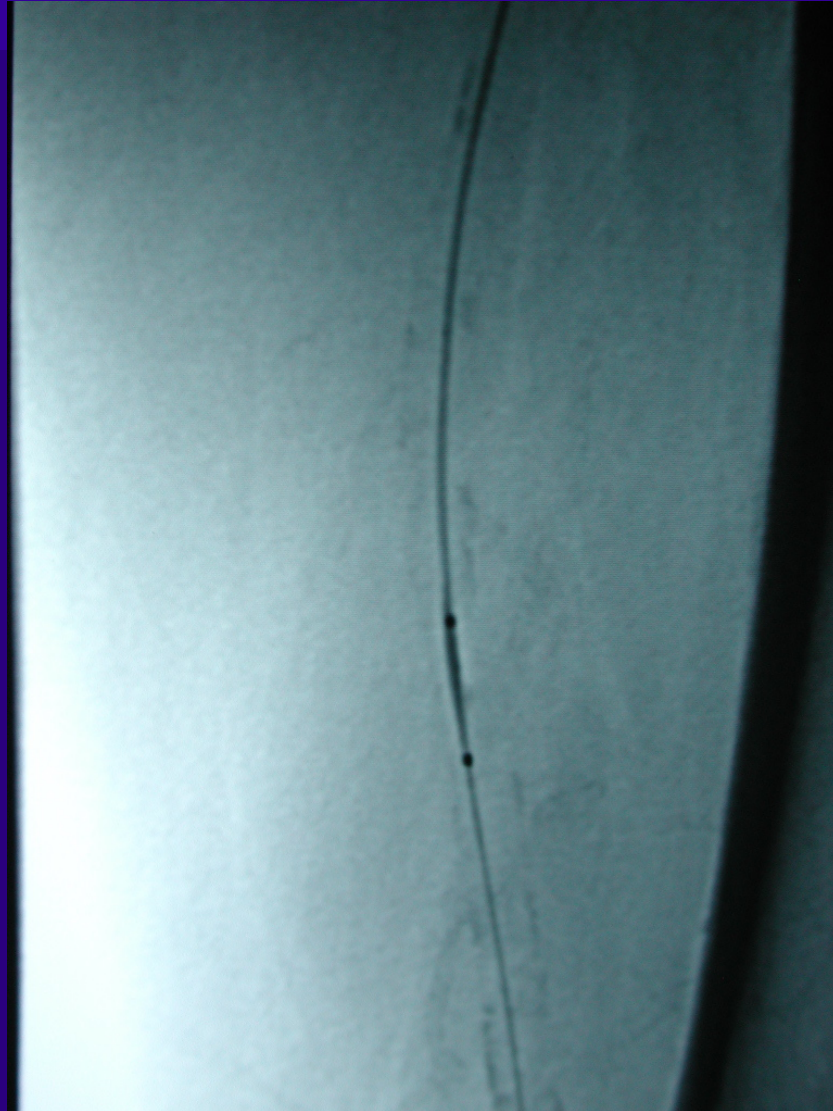


- 
- 
- 



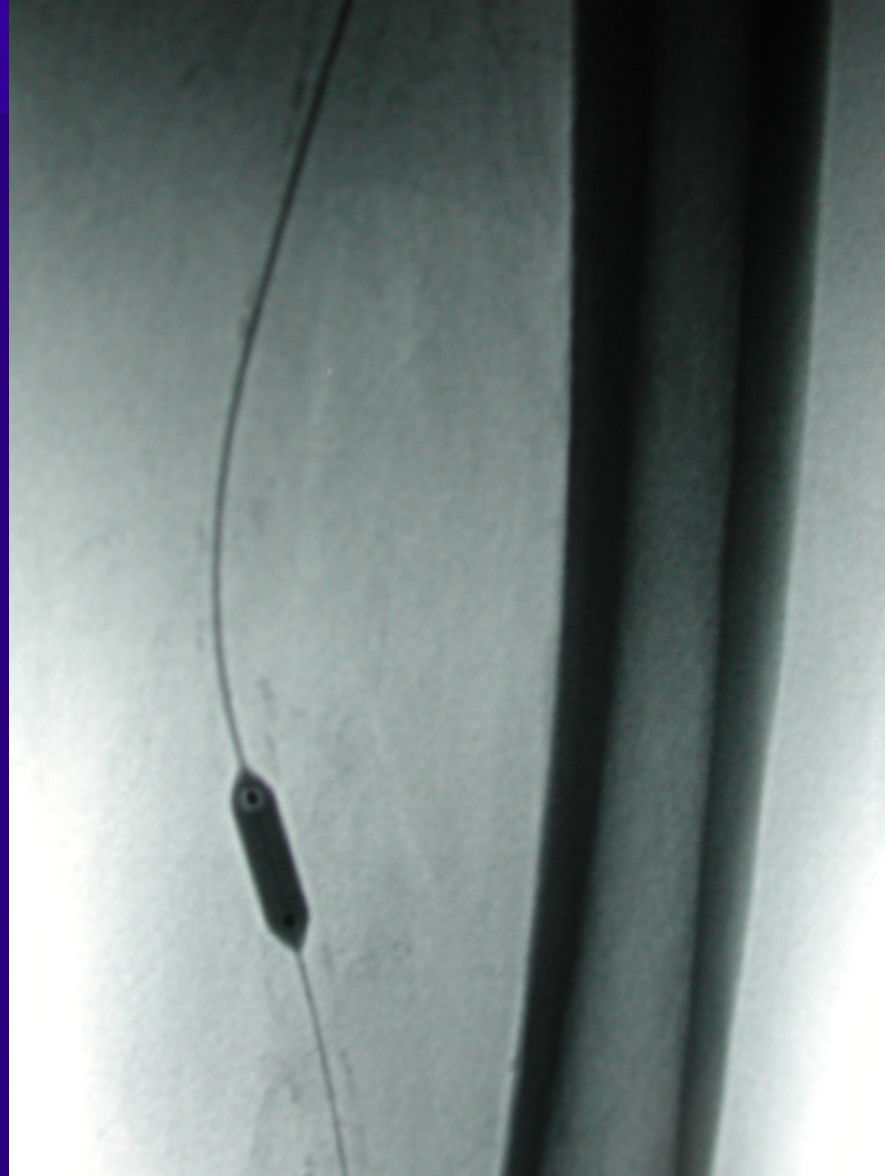
- 
- 
- 
- 
- 
- 
- 
-

- 
- 
- 



- 
- 
- 
- 
- 
- 
- 
- 
-

- 
- 
- 



- 
- 
- 
- 
- 
- 
- 
-

- 
- 
- 



- 
- 
- 
- 
- 
- 
- 
-

•  
•  
•

# A Friday afternoon case













- 
- 
- 



- 
- 
- 
- 
-

- 
- 
- 



- 
- 
- 
- 
- 
- 
- 
- 
-



# Hyperbaric therapy





- 
- 
- 

# Maggot therapy

---



# Group spirit /team

---



ARE WE COMPLETE???



# ARE WE COMPLETE ???



Hospital hygienist

# Recommendations for health care providers

riskprofile

0

1

2  
a

2b

3

GP's

# Recommendations for health care providers

riskprofile

0 1 2 a 2b 3

Wagner classification

I II III IV V

Diabetic foot clinic

GP's

# Recommendations for health care providers

riskprofile

Wagner Classification

0 1 2 a 2b 3

I II III IV V

GP's

Diabetic foot clinic

« shared care »

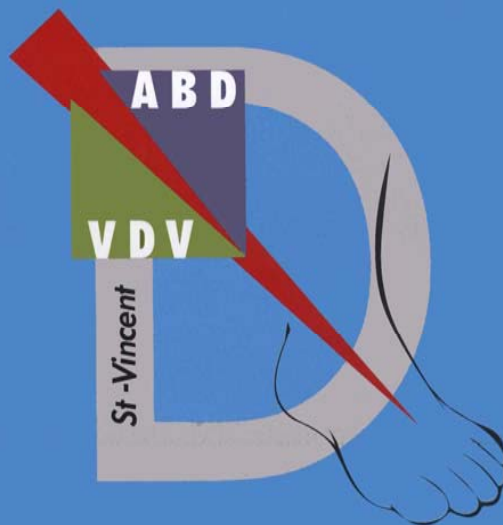
# National project diabetic foot

Nationaal project diabetische voet

Multidisciplinaire samenwerking in de eerstelijns

Projet national pied diabétique

Groupe de travail multidisciplinaire de première ligne







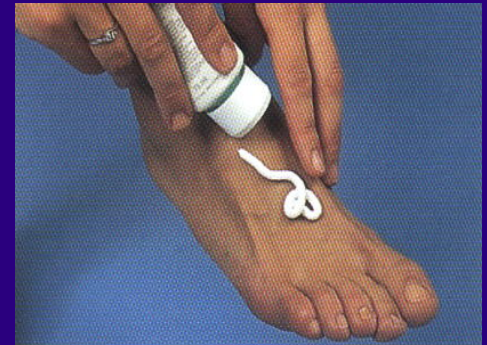
**BESCHERM "JE" VOETEN**  
Actieplan voor mensen met diabetes



Diabetes Therapy  
Aankomende Pagina 44 Pagina

The central graphic is a white rectangular area with a dark blue, jagged-edged border. Inside this area, two yellow footprints are shown, one slightly behind the other, as if walking. The background of the entire graphic is dark blue with a repeating pattern of yellow footprints.





# A believer or a Djembé - player ?

---



ZELFHULPGROEP  
VOOR  
INDIVIDUALISTEN

